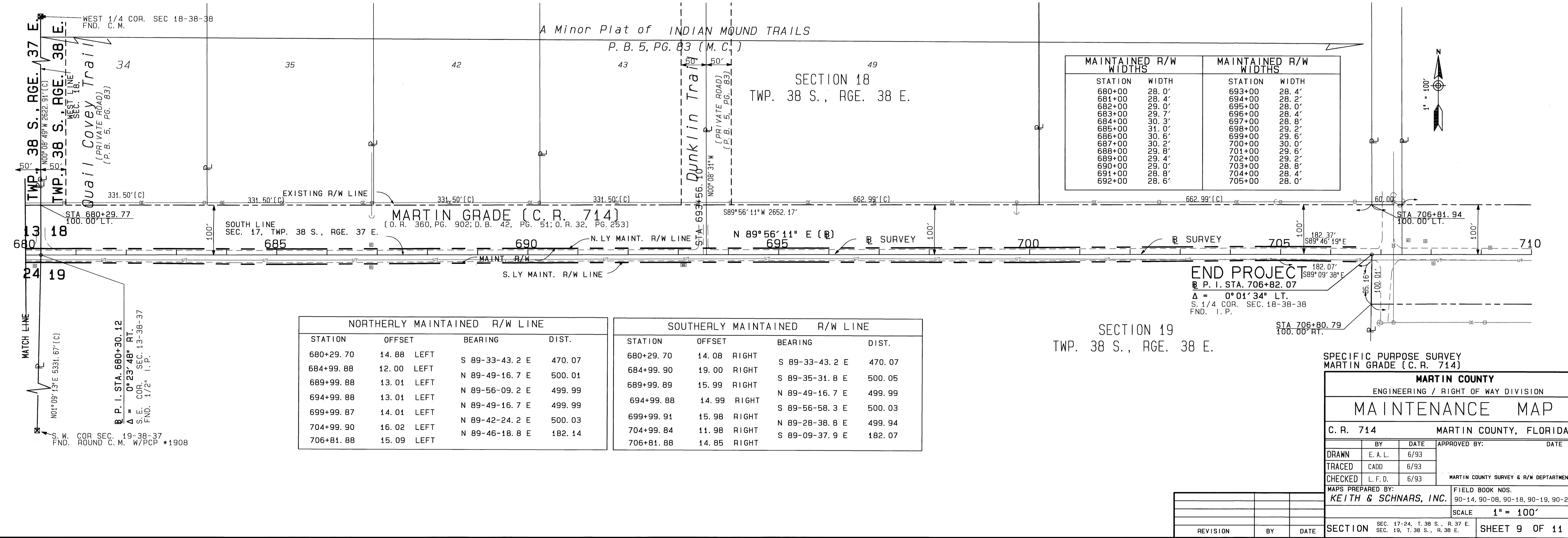
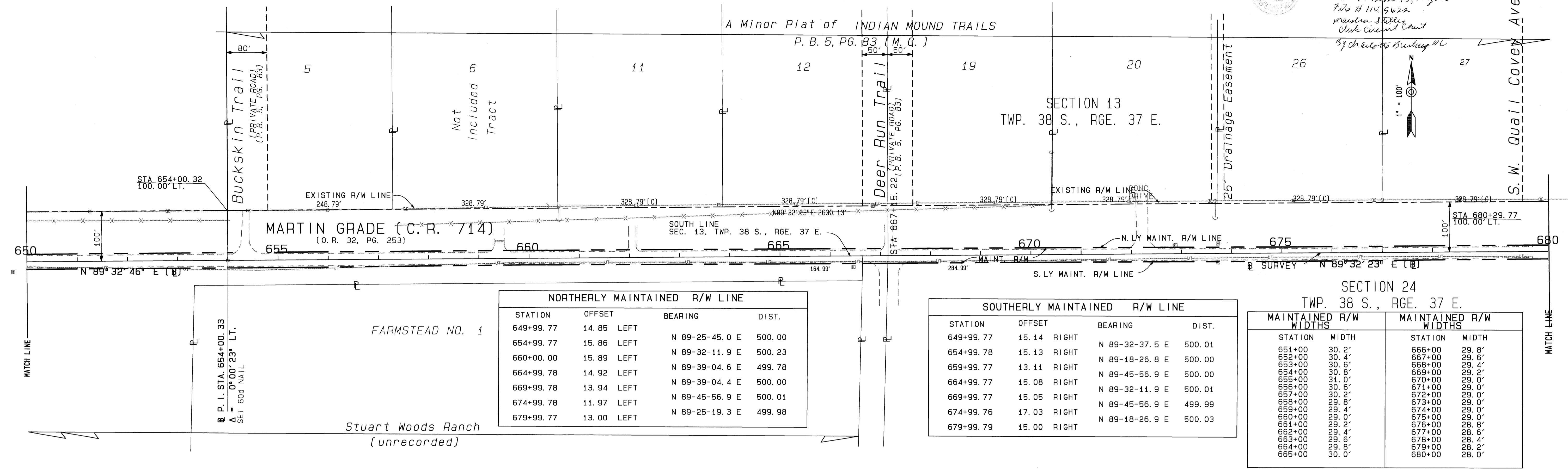


Filed for Record this
17th day of Nov., 1995
in Plat Book 13, Page 98.
File # 1145422
Martin County
Clark Circuit Court
By Charles G. Building



SPECIFIC PURPOSE SURVEY
MARTIN GRADE (C.R. 714)

MARTIN COUNTY
ENGINEERING / RIGHT OF WAY DIVISION

MAINTENANCE MAP

C. R. 714 MARTIN COUNTY, FLORIDA

BY	DATE	APPROVED BY	DATE
DRAWN	E. A. L. 6/93		
TRACED	CADD 6/93		
CHECKED	L. F. D. 6/93		

MAPS PREPARED BY: **KEITH & SCHNARS, INC.** FIELD BOOK NOS. 90-14, 90-08, 90-18, 90-19, 90-20

SCALE: 1" = 100'

SECTION 19, T. 38 S., R. 38 E. SHEET 9 OF 11

REVISION	BY	DATE